



A Watch You Can Trust

**INSTRUCTION MANUAL FOR
WATCH CALIBRE
Z018**



WARNING



THIS PRODUCT CONTAINS A BUTTON BATTERY

If swallowed or placed inside any part of the body, the battery can cause severe or fatal injuries within 2 hours or less.

Button batteries are hazardous whether new or used. Keep batteries out of reach of children.

If you think the battery may have been swallowed or placed inside any part of the body, seek immediate medical attention. Contact the Australian Poisons Information Centre immediately on 13 11 26 (New Zealand 0800 764 766) for 24 / 7 fast, expert advice.

Instruction Manual



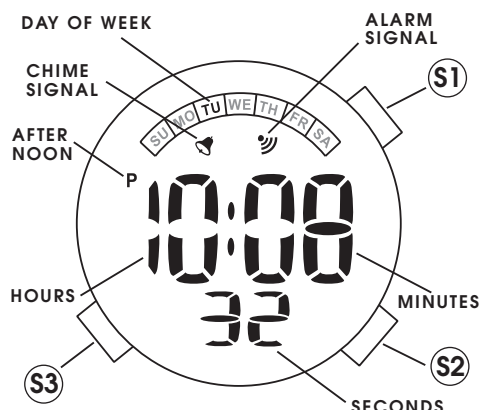
CAL. Z018 (R23 SERIES)



CHARACTERISTICS

- Time/calendar display:** Hour, Minute, Second, Month, Date and day of the week.
- Time Indication:** 12-hour display format with PM indicator and 24-hour display format are available.
- Daily alarm:** The alarm can be set to sound at the designated time on a 24-hour basis.
- Chime:** The chime can be set to sound every hour on the hour with a single beep.
- Stopwatch:** The stopwatch can measure up to 23 hours 59 minutes and 59 seconds in 1/100-second increments. Lap time measurement is available.

BUTTONS AND DISPLAYS

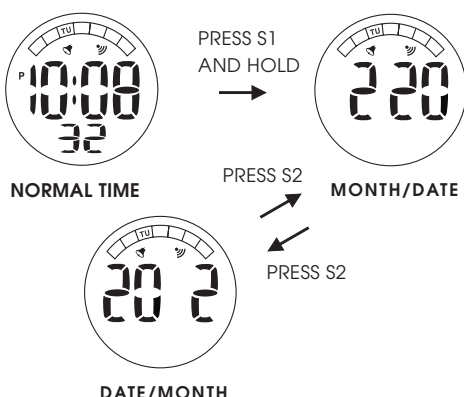


The display in other modes

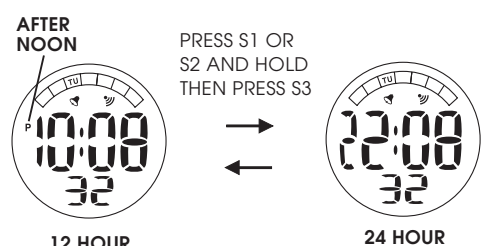
- * Press S2 and hold it to show the ALARM TIME, release to return to NORMAL TIME display.
- * Press S1 and hold it to show the MONTH/DATE, or DATE/MONTH, release to return to NORMAL TIME display.

HOW TO SWITCH MONTH/DATE DISPLAY

- From NORMAL TIME display, press S1 and hold it to show the MONTH/DATE display.
 - Press S2 to switch to the DATE/MONTH display.
 - Press S2 again to switch back to the MONTH/DATE display.
- * The display format in either MONTH/DATE indication or in DATE/MONTH indication can be selected alternately by pressing S2.



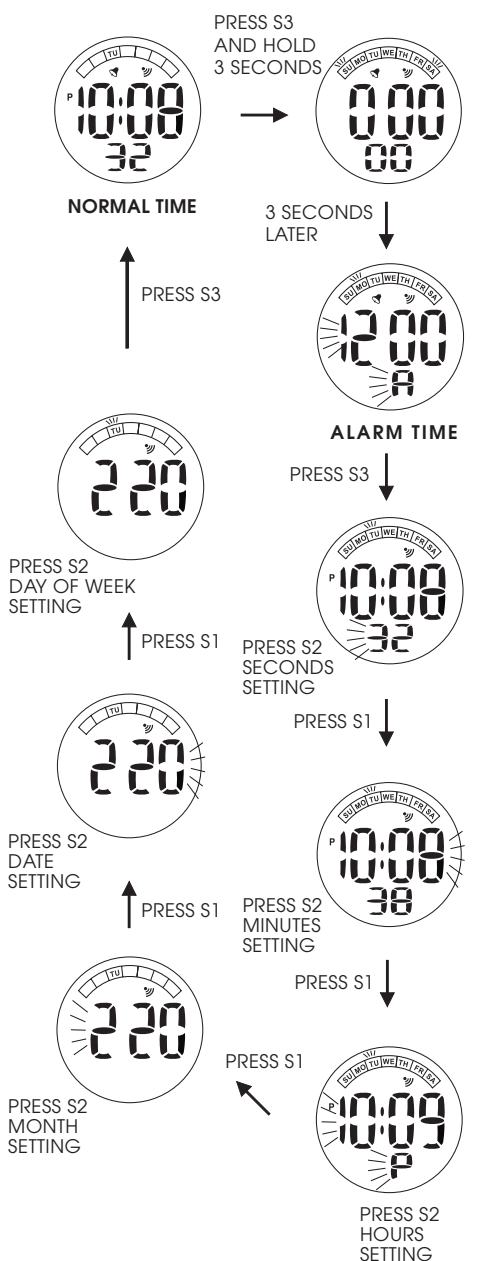
HOW TO SWITCH 12-HOUR/24-HOUR FORMAT



- Press S2 or S1 and hold it. Then press S3 to switch the display.
- * The time display format in either 12-hour indication or in 24-hour indication can be selected alternately.
 - * Under the 12-hour indication format, "PM" mark appears in the afternoon, but no AM mark appears in the morning. Under the 24-hour indication format, no mark appears on the display.

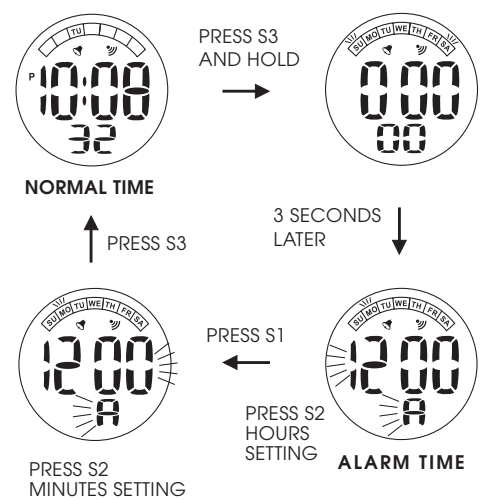
HOW TO SET THE TIME/CALENDAR

- From NORMAL TIME display, press and hold S3 for 3 seconds to show the ALARM TIME display.
 - Press S3 again to move on to SECONDS setting. The second digits start flashing.
 - Press S2 in accordance with a time signal. The second digits are reset to "00" and start counting immediately.
- * When the second digits count any number from "30" to "59" and S2 is pressed, one minutes is added. If second digits count any number from "00" to "29", minutes will not be changed.
 - * Selection of the digits to be adjusted (flashing) is made in the order below by pressing S1 and then pressing S2 to be set.
 - * While advancing, hold S2 can fasten the process.



- After all the adjustment are completed, press S3 to return to the NORMAL TIME display.
- * Press S3 at any time to return to NORMAL TIME DISPLAY.

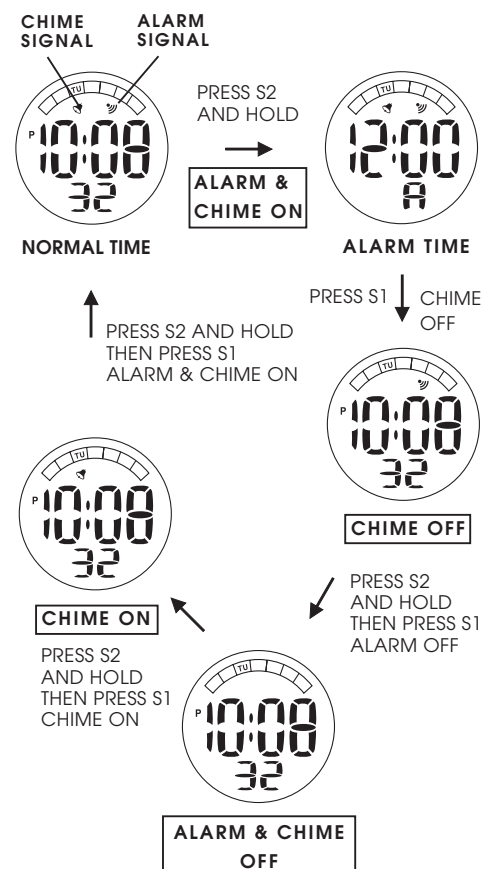
HOW TO SET ALARM TIME



- From NORMAL TIME display, press and hold S3 for 3 seconds to show the ALARM TIME display. The hour digits start flashing.
 - Press S2 to set HOURS setting.
 - Press S1 to move on to MINUTES setting.
 - Press S2 to set MINUTES setting.
 - After all the setting are completed, press S3 to return to the NORMAL TIME display.
- * Selection of the digits to be adjusted (flashing) is made by pressing S1 and then pressing S2 to be set.
 - * While advancing, hold S2 can fasten the process.

Engagement/Disengagement of ALARM & CHIME

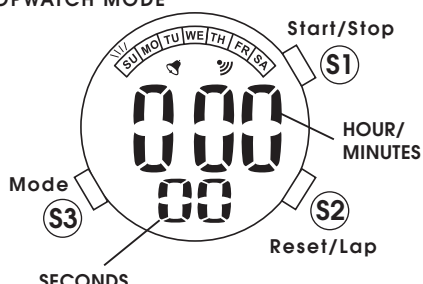
- * Press S2 and hold it, and then press S1, the ALARM and CHIME can be engaged or disengaged in the order below.
- * The ALARM signal and/or CHIME signal appear or disappear on the display accordingly.
- * The ALARM sounds for 20 seconds at the designated time. Press S2 to stop the alarm after it starts sound.



■ HOW TO USE STOPWATCH

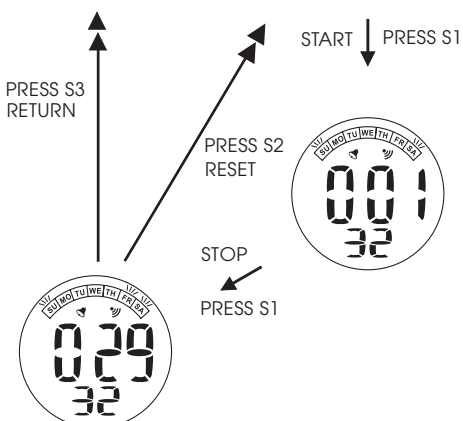
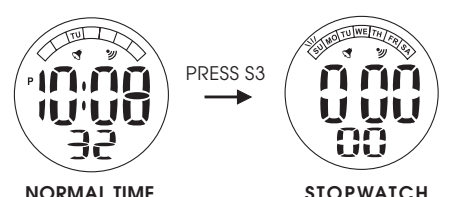
* From NORMAL TIME display, press S3 to go to the STOPWATCH mode.

STOPWATCH MODE

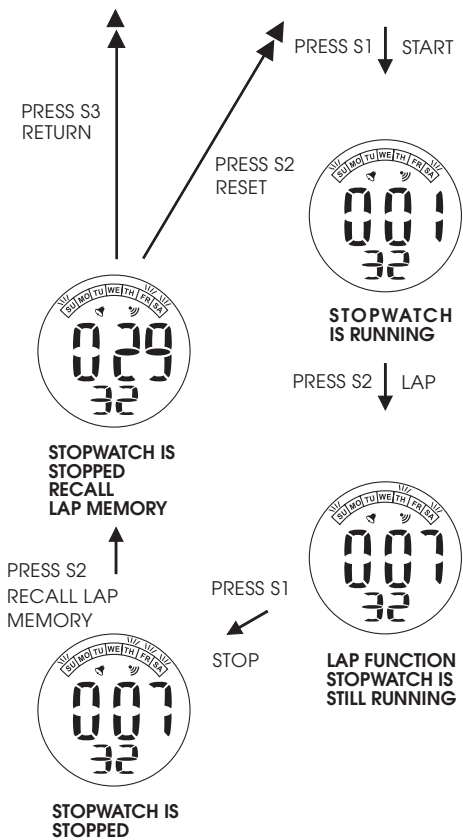
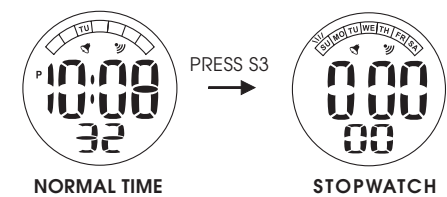


Standard Measurement

1. Press S1 to start and stop the STOPWATCH.
2. Press S2 to reset the STOPWATCH to "0:00: 00."



Lap Time Measurement



- * While the stopwatch is measuring, press S2 to take lap times.
- * Measurement and release of lap times can be repeated when S2 is pressed.
- * Press S3 to return to the NORMAL TIME display.

■ BATTERY CHANGE

1. The miniature battery SEIKO CR1220, Maxell CR1220 or SONY CR1220, which powers your watch should last approximately 2.5 years. However, because it is inserted at the factory, the actual life of the battery once in your possession may be less than 2.5 years.
2. Be sure to replace the battery to prevent any possible malfunction as soon as it runs down.
3. To replace the battery we recommend taking the watch to a local watch repair shop.

Note:

If the alarm is used for more than 20 seconds a day, the battery life may be less than the specified period. After the batteries are replaced with new ones, set the time/calendar and alarm.

■ CARE OF YOUR LORUS WATCH

This watch contains precise electronic components. Never attempt to open the case or remove the back cover.

• BATTERY



CAUTION

Do not expose the old battery to fire or re-charge it. Keep it at a place beyond the reach of children. If a child swallows it, consult a doctor immediately.

• WATER RESISTANT

Condition of use	Accidental contact with water, such as splashes and rain	Swimming and taking a shower	Skin diving	Scuba diving
Indication on the dial/case back				
No Indication	NO	NO	NO	NO
WATER RESISTANT	YES	NO	NO	NO
WATER RESISTANT (50M/5 BAR)	YES	YES	NO	NO
WATER RESISTANT (100M/10 BAR) or above	YES	YES	YES	NO

* If your watch is 200 M/20 BAR, 100 M/10 BAR or 50 M/5 BAR water resistant, it is so indicated on the dial/case back.

- Do not operate the buttons when the watch is wet.
- If the watch is exposed to salt water, rinse it in fresh water and then wipe it thoroughly dry.
- Should you find any water or condensation inside the watch, immediately have it checked. Water can corrode electric parts inside the case.

Caution:

Leather straps are not water resistant except so indicated, even if the watch head is water resistant.

• ALLERGIC REACTION

Because the case and band touch the skin directly, it is important to clean them regularly. If not, shirt sleeves may be stained and those with delicate skin may develop a rash. Please wear the watch with some play to avoid any possible allergic reaction. If you develop a rash on your wrist, stop wearing and consult a physician.

• MAGNETISM

Your watch will be adversely affected by strong magnetism. Keep it away from close contact with magnetic objects.

• SHOCKS AND VIBRATIONS

Your watch may be worn for normal sports activities, but be careful not to drop it or hit it on hard surfaces.

• TEMPERATURE

Your watch is preadjusted so that constant accuracy may be insured at normal temperature.

• CLEANING

Use only a soft cloth and clean water for cleaning your watch. Never use chemicals, as the waterproof gasket will corrode.

■ SERVICE

When your LORUS watch requires repair or servicing, please see the enclosed WARRANTY/GUARANTEE.

Printed in China