



A Watch You Can Trust

**INSTRUCTION MANUAL FOR
WATCH CALIBRE
Z012**



WARNING



THIS PRODUCT CONTAINS A BUTTON BATTERY

If swallowed or placed inside any part of the body, the battery can cause severe or fatal injuries within 2 hours or less.

Button batteries are hazardous whether new or used. Keep batteries out of reach of children.

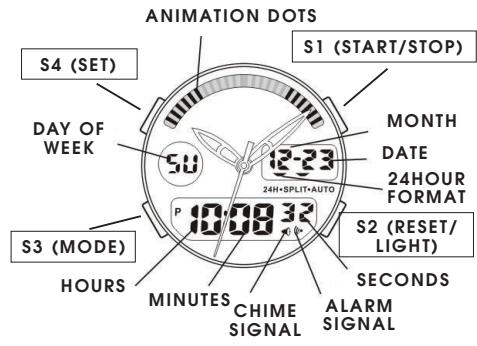
If you think the battery may have been swallowed or placed inside any part of the body, seek immediate medical attention. Contact the Australian Poisons Information Centre immediately on 13 11 26 (New Zealand 0800 764 766) for 24 / 7 fast, expert advice.

- Multi-function digital watch with 12 or 24 animation dots.

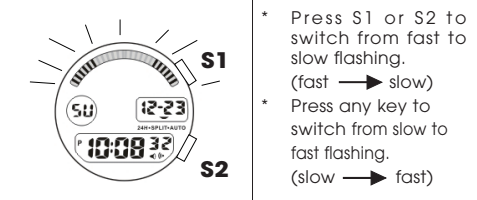
CHARACTERISTICS

- Analogue & digital time displays:** Hour, Minute, Second, Month, Date and day of the week.
- Automatic calendar:** The calendar automatically adjusts the dates and months from the year of 2000 to 2049.
- Daily alarm and hourly chime:** The alarm can be set to sound at the designated time on a 24-hour basis and the chime can be set to sound every hour on the hour with a single beep.
- Second time zone:** Time in a different time zone can be displayed.
- Countdown timer:** The countdown timer can be set up to 23 hours 59 minutes and 59 seconds.
- Stopwatch:** The stopwatch can measure up to 23 hours 59 minutes and 59 seconds in 1/100-second increments. Split time measurement is available.
- Selection of 12 or 24-hour format:** The time display format in either 12-hour indication or 24-hour indication can be selected.
- Animation dots are displayed:** Animation dots are displayed in both 12 and 24-hour format and can be selected in either fast flashing or slow flashing.
- EL backlight:** The built-in electro-luminescent (EL) backlight illuminates the display for easy viewing in darkness.

LCD DISPLAY AND BUTTONS FUNCTION



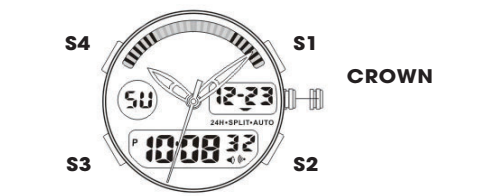
* Animation dots are displayed in both 12 and 24-hour format.



SETTING THE TIME (ANALOGUE)

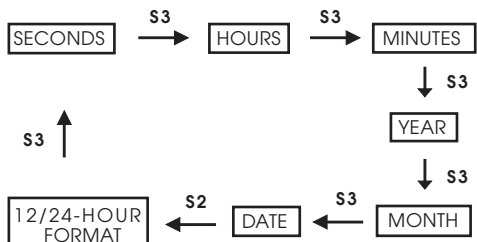
- Pull the crown out one step, the second hand will stop.
- Set the correct time by turning the crown.
- Push the crown back to the original position. The watch will start running again.

* The analogue indication and digital display of the time setting can be adjusted separately.

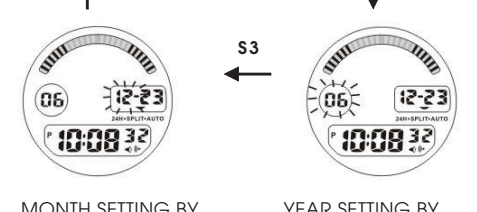
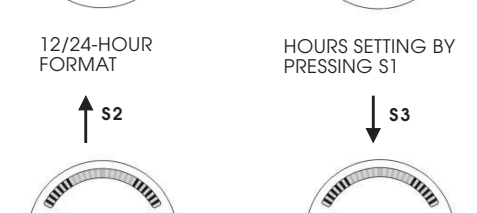


HOW TO SET NORMAL TIME / CALENDAR

- Press S3 button to show the NORMAL TIME mode.
 - Press S4 button to begin setting procedure. The seconds digit starts flashing.
 - Press S1 button to set SECONDS setting.
 - Press S3 button to move on to HOURS setting.
- * Selection of the digits to be adjusted is made in the following order by pressing S3 button and then pressing S1 button.
- Press S3 button after completing the setting.

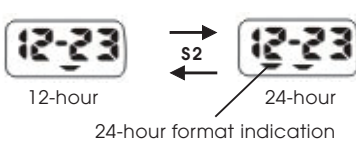


* Day of week will change automatically based on date changing.



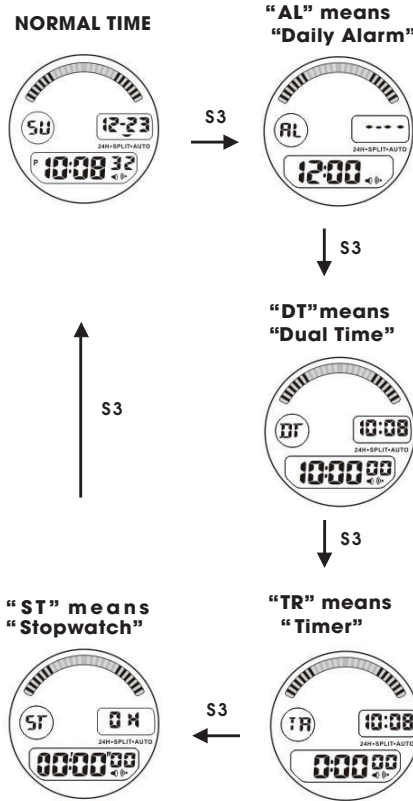
Selection of 12-hour/24-hour format

- The time display format in either 12-hour indication or in 24-hour indication can be selected by pressing S2 button. Under the 12-hour indication format, no mark appears on the display. Under the 24-hour indication format, "-" mark appears under the date indicator.
- The calendar automatically adjusts the dates and months from the year of 2000 up to 2049.



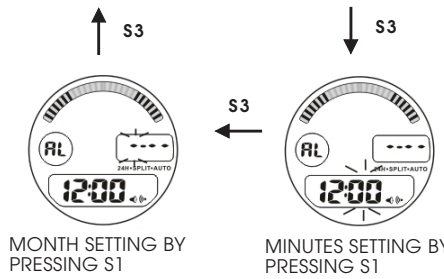
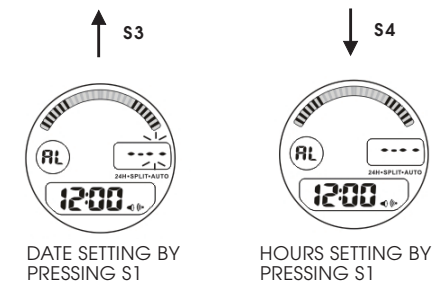
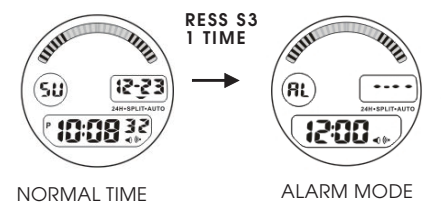
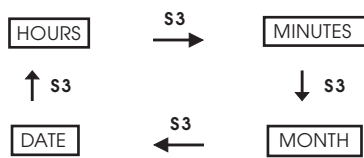
HOW TO CHANGE THE DISPLAY MODE

- Press S3 button to show the NORMAL TIME mode.
- If the NORMAL TIME mode is shown already on the display, skip the above operation.
- Press S3 button to change the display mode in the following order.



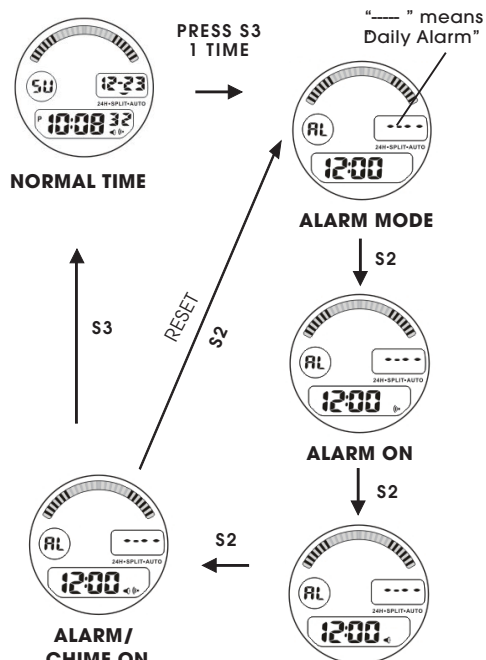
HOW TO SET ALARM TIME

- From NORMAL TIME mode, press S3 button once into ALARM mode.
 - Press S4 button to begin setting procedure. The hours digit starts flashing.
 - Press S1 button to set HOURS setting.
 - Press S3 button to move on to MINUTES setting.
- * Selection of the digits to be adjusted is made in the following order by pressing S3 button and then pressing S1 button.
- Press S3 button after completing the setting.



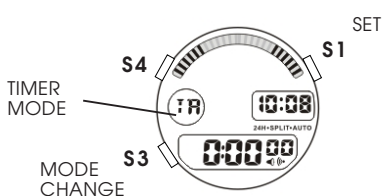
Engagement/Disengagement of ALARM & CHIME

- With each press of S2 button, the ALARM and CHIME can be engaged or disengaged in the following order. The ALARM signal and/or CHIME signal appear or disappear on the display accordingly.
- The ALARM can be set only in one time zone.
- If month and date are set, it will alarm once.

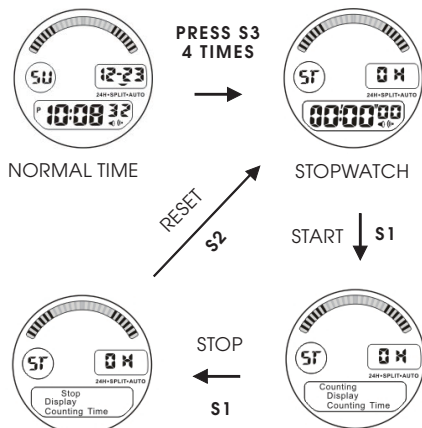


HOW TO SET COUNT DOWN TIMER

Countdown Timer Setting

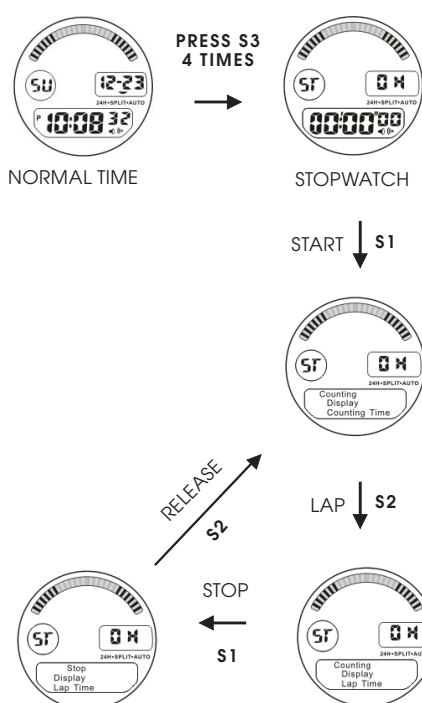


- From NORMAL TIME mode, press S3 button 3 times into TIMER mode.
- Press S4 button to begin setting procedure. The HOURS digit starts flashing.
- Press S3 button to move on to MINUTES setting.
- Press S3 button after completing the setting.



Lap Time Measurement

- Press S1 to start counting first lap time.
- Press S2 button, the STOPWATCH keeps counting first lap time and showing it on the display.
- Press S1 button to stop counting first lap time.
- Press S2 button to release first lap time.
- Press S1 button to start counting second lap time. The STOPWATCH shows second lap time.
- This operation can be repeated and the split time can be read.
- Press S2 to finish counting the lap time measurement.
- Press S2 again to reset the STOPWATCH to "0:00; 00."



* Press S3 button return to NORMAL TIME display.

HOW TO USE EL BACKLIGHT

- Press S2 button in any mode to turn the illuminating light on.



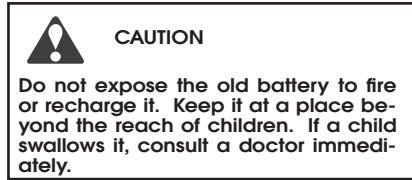
Note:

- The backlight of the watch employs an electro-luminescent (EL) light, which tends to lose illuminating power after very long use.
 - The illumination provided by backlight may be hard to see when viewed under direct sunlight.
- * When the illuminating light becomes dim, replace the batteries with new ones.

CARE OF YOUR LORUS WATCH

This watch contains precise electronic components. Never attempt to open the case or remove the back cover.

BATTERY



WATER RESISTANT

Condition of use	Accidental contact with water, such as splashes and rain	Swimming and taking a shower	Skin diving	Scuba diving
Indication on the dial/case back				
No Indication	NO	NO	NO	NO
WATER RESISTANT	YES	NO	NO	NO
WATER RESISTANT (50M/5 BAR)	YES	YES	NO	NO
WATER RESISTANT (100M/10 BAR or above)	YES	YES	YES	NO

- If your watch is 200 M/20 BAR, 100 M/10 BAR or 50 M/5 BAR water resistant, it is so indicated on the dial/case back.
- Do not operate the buttons when the watch is wet.
- If the watch is exposed to salt water, rinse it in fresh water and then wipe it thoroughly dry.
- Should you find any water or condensation inside the watch, immediately have it checked. Water can corrode electric parts inside the case.

Caution:

Leather straps are not water resistant except so indicated, even if the watch head is water resistant.

ALLERGIC REACTION

Because the case and band touch the skin directly, it is important to clean them regularly. If not, shirt sleeves may be stained and those with delicate skin may develop a rash. Please wear the watch with some play to avoid any possible allergic reaction. If you develop a rash on your wrist, stop wearing and consult a physician.

MAGNETISM

Your watch will be adversely affected by strong magnetism. Keep it away from close contact with magnetic objects.

SHOCKS AND VIBRATIONS

Your watch may be worn for normal sports activities, but be careful not to drop it or hit it on hard surfaces.

TEMPERATURE

Your watch is preadjusted so that constant accuracy may be insured at normal temperature.

CLEANING

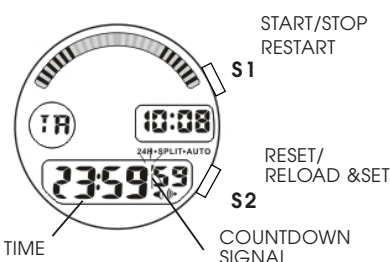
Use only a soft cloth and clean water for cleaning your watch. Never use chemicals, as the water-proof gasket will corrode.

SERVICE

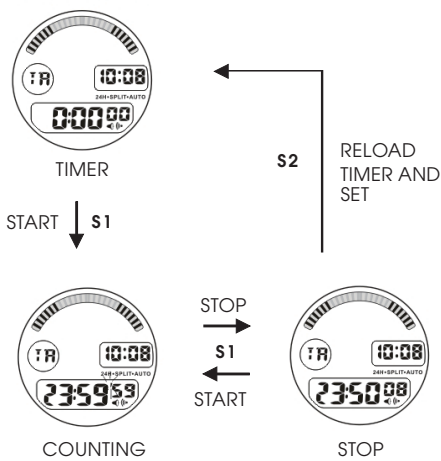
When your LORUS watch requires repair or servicing, please see the enclosed WARRANTY/GUARANTEE.

Printed in China

Countdown Timer Operation

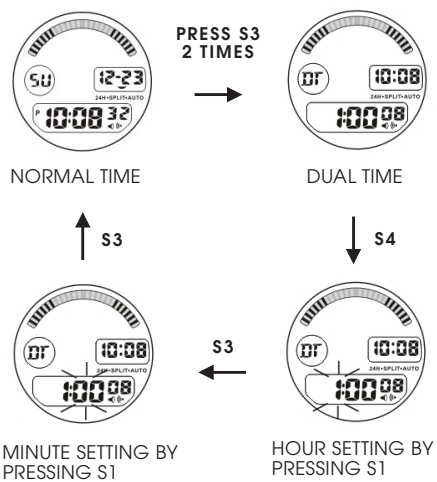


- Press S1 button while in the TIMER mode to start the COUNTDOWN TIMER.
- The countdown signal ":" appears and starts flashing.
- Press S1 button again to stop the COUNTDOWN TIMER.
- While in the COUNTDOWN TIMER MODE, press S2 button to reset the countdown time to its starting value and to start to countdown automatically or while in countdown time mode press S2 button and then press S1 button to reset the countdown time.
- Press S3 button return to NORMAL TIME display.



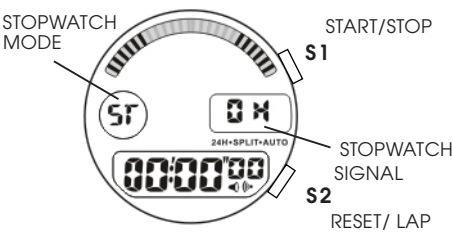
HOW TO SET SECOND TIME ZONE

- From NORMAL TIME mode, Press S3 button 2 times into DUAL TIME mode.
 - Press S4 button to begin setting procedure. The HOURS digit starts flashing.
 - Press S1 button to set HOUR setting.
 - Press S3 button to move on to MINUTE setting.
- * Selection of the digits to be adjusted is made in the following order by pressing S3 button and then pressing S1 button.
- Press S3 button after completing the setting.



HOW TO USE STOPWATCH

- From NORMAL TIME mode, Press S3 button 4 times into STOPWATCH mode.



Standard Measurement

- Press S1 button alternately to start and stop the STOPWATCH.
- Press S2 button to reset the STOPWATCH to "0:00; 00."

